



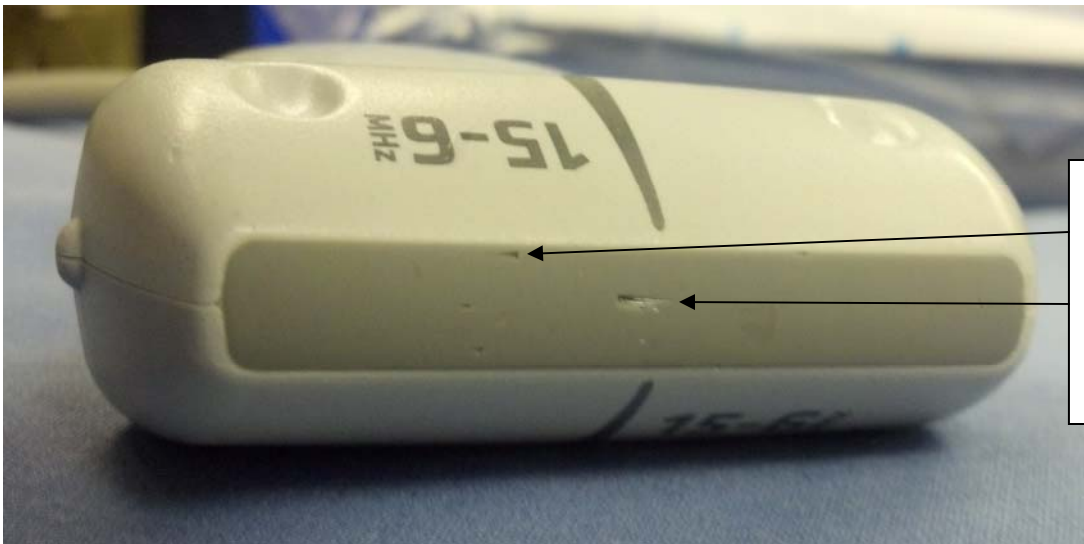
## TRANSDUCER DAMAGE FROM USING A SEMI-OCCLUSIVE DRESSING



This crack in the transducer was caused by using a semi-occlusive dressing as a probe cover

These photographs were supplied by Anesthesiologists who experienced transducer damage as the result of their use of semi-occlusive dressings as probe covers. This damage might have been prevented with the use of Safersonic Probe Covers as Safersonic Probe Covers are approved as a probe cover and our adhesive does not cause delamination of the transducer head.

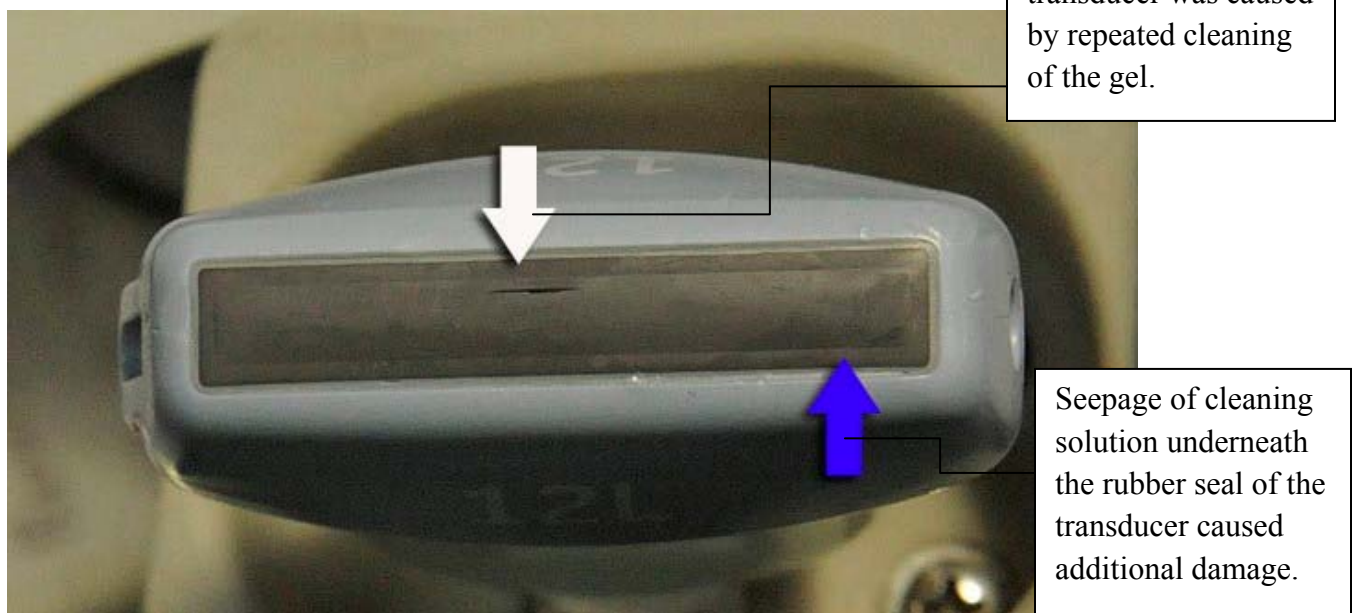
In addition to the delamination issue, another reason to avoid using semi-occlusive dressings is that the porosity of the semi-occlusive dressings can allow micro-organisms on the transducer to come out through the dressing. Safersonic Probe Covers are approved as a probe cover to protect patient and equipment.



The cracks in the transducer was caused by using a semi-occlusive dressing as a probe cover



REPEATED CLEANING OF GEL  
FROM TRANSDUCER  
MAY RESULT IN  
TRANSDUCER DAMAGE



This photograph was supplied by an anesthesiologist. The transducer on his ultrasound unit needed to be replaced as a result of the required cleaning of the gel off of the transducer per standard protocol. It is possible that the wrong cleaning solutions were utilized.

However, this damage might have been prevented with the use of Safersonic Probe Covers as only Safersonic Probe Covers do not require gel under the transducer cover.